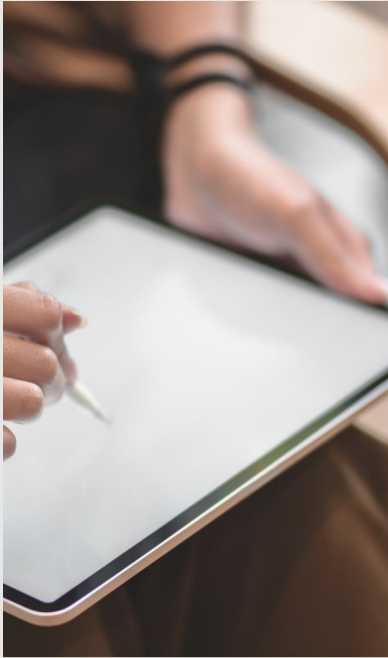


THE CONNECTOR



MTI Biblical Courses

JOIN THE BEBA EXTENSION CENTER
OF SAMFORD UNIVERSITY

BIBLICAL INTERPRETATION COURSE BEGINS

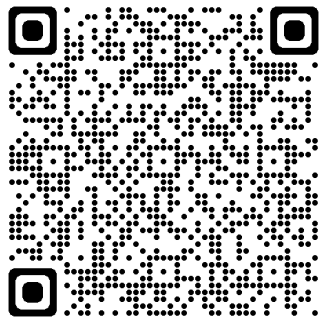
TUESDAY, JANUARY 23, 2024 6-9 PM
1245 S. ROANE ST. HARRIMAN, TN 37748

\$50 PER PERSON + REQUIRED READING

WEBSITE:
BEBATN.COM/MTI

OFFICE PHONE:
865.882.6446

Tell us when your VBS will be



- Step 1. Open up your camera app on your phone
- Step 2. point the camera at the dotted square
- Step 3. Click the link that appears at the bottom of the picture
- Step 4. Fill in the form that the link takes you to.

✦ *DONT SEE YOUR CHURCHES EVENT? LET US KNOW AND WE'LL BE SURE TO ADD IT.* ✦

CANNON'S CORNER

BY MATT CANNON

“AN EXCITING OPPORTUNITY”

“Thy word is a lamp unto my feet, and a light unto my path.” - Psalm 119:105

I think of this verse often as I ponder the importance of the Bible. The best tool we have at our disposal to grow in spiritual maturity is the Word of God. The main way we speak to God is through prayer, and the main way He speaks to us is through His Word. This divine dialogue is extremely important as we seek to follow our Savior. This is the reason we should devote ourselves to the daily reading and studying of Scripture and the reason we should encourage others to do the same.

It is also why I am so excited about the Big Emory Baptist Association becoming an extension center of Samford University's Ministry Training Institute (MTI). This means we will offer affordable theological and ministry education through the MTI here in the Big Emory Baptist Association!

Each course costs just \$50 plus the cost of the textbook and is eight weeks in duration. The first course will be "Biblical Interpretation" and be offered on Tuesday nights from Jan. 23-March 12 from 6-9 pm and the second course will be "Intro to the Old Testament" and be offered on Tuesday nights from March 26-May 14 from 6-9 pm.

These courses are open to anyone from age 16 to 116 (and beyond) who wants to learn more about God and His Word. Various diplomas are also awarded to anyone who completes the required courses. Those wanting to register can go to www.bebatn.com/mti and click the "register" button. Additional information can also be found at the same place.

If you or anyone you know has any questions regarding MTI, please have them contact me by phone at [865-278-8801](tel:865-278-8801), email at bigmattcannon@yahoo.com, or by coming by the office.

Serving Him with You,

Bro. Matt

Events

Pastor uplift gathering

January 23 @ 9 AM

Big Emory Baptist Association

Bi-Vocational Pastor's Round table

January 25th @ 7PM

Shoney's in Harriman, TN

Pastor's Conference

Feb. 7th @ 10:30 AM

Beech Park Baptist Church

Next Newsletter

February 15th

Emailed or printed by churches

BEBA 1 Conference

March 2, 2024, from 5 -10 PM

RSCC O'Brien Theatre

Executive Board Meeting

March 11th @ 9:00 AM

BEBA, Great Commission Center



PRAY FOR OUR CHURCHES WITHOUT PASTORS



CHAPMAN GROVE
EUREKA
LIBERTY

POND GROVE
KELLYTOWN
WALNUT HILL